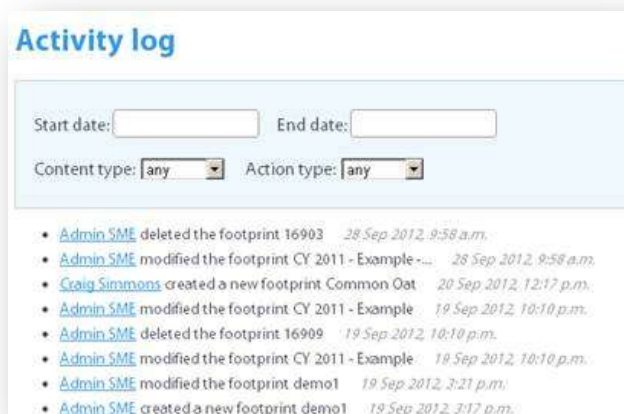
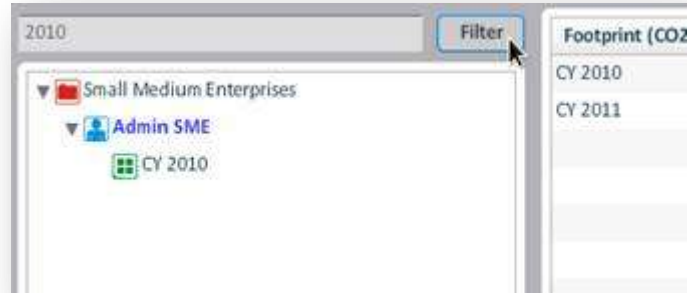


Recent changes to Footprint Reporter Quicker, easier and more powerful carbon footprinting for your organisation

A new way of finding your footprints

As your reporting needs grow – with an expansion of your organisation, more detailed data collection, or a broader sustainability program – Footprint Reporter grows with you. A new “filter” option lets you track down particular footprints in a matter of seconds, and this is only the first of several improvements we’ll be rolling out to make life easier when footprinting at scale.



Keep track of who's footprinting what

The new “Activity” section gives you a useful overview of recent changes in your group.

Metrics about metrics

To meet more advanced activity reporting needs, and for our Footprint Reporter reseller partners, customisable Excel reports provide detailed information about activity across groups and users.

| | A | B | C | D | E |
|---|-----------------------|-----------------|--------------------|------------------|---------------------|
| 1 | Client | Channel partner | Subscription start | Subscription end | Subscription status |
| 2 | Rees-Eller (reseller) | | 25/06/2012 | (never) | (unlimited) |
| 3 | Small Med | Rees-Eller In | 25/06/2012 | 24/06/2013 | (active) |
| 4 | sub_test | Rees-Eller In | 27/07/2012 | (never) | (unlimited) |
| 5 | Test Secti | Rees-Eller In | 03/07/2012 | (never) | (unlimited) |

2. Reporting period
 Last year (from 10/10/11) [v]

Start date: 10/10/2011
 End date: 10/09/2012

3. Options
 Report name: account_report_2012-10

4. Generate and download
 Generate report